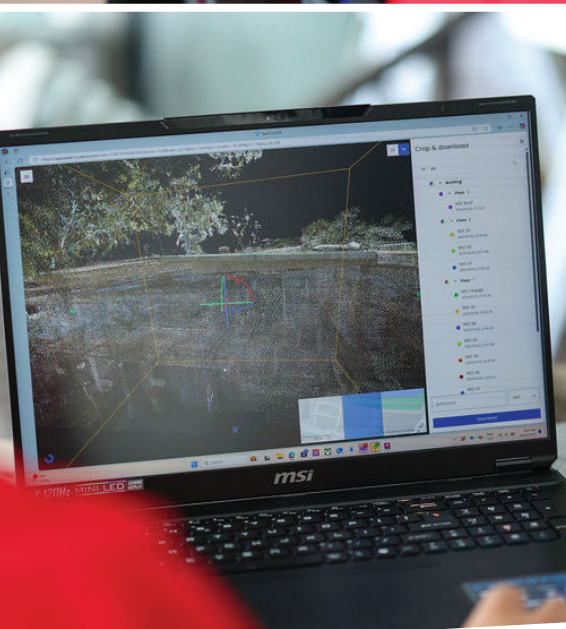


# Capability Statement 2025



## COMPANY OVERVIEW

Capture All is a solutions focused company at the forefront of reality capture and modelling services offering cutting-edge mobile 3D scanning technology and architecturally trained technicians to revolutionise the way industries plan, design, and build.

## OUR TECHNOLOGY

At Capture All, we use advanced mobile scanning technology that is approximately 10x faster than traditional terrestrial laser scanners (TLS), without sacrificing accuracy. This rapid scanning process significantly reduces time spent on-site and minimises disruption to ongoing operations, construction, or day-to-day activities. Our solutions deliver comprehensive 3D models and as-built data, providing clients with an accessible, precise digital foundation from which to design, manage, and execute projects.

## IDEAL FOR...

- Renovations / Refurbishments / Extensions
- Asset Management
- Dilapidation Reports
- Construction Milestones
- Development Approvals - Site Context
- Project Design Starter Kits
- Real Time Collaboration and Decision making
- Measurable Evidence Based Data

## OUR SERVICES

### 3D Scanning with Colourised Point Cloud

Capture every detail of your project with high-accuracy colourised scans. Our mobile scanning technology allows for rapid data collection, capturing intricate details of buildings, infrastructure, and assets, including hard-to-reach areas. Colourisation of Point Clouds enhances usability for efficient, effective interrogation.

### Reality Capture (Photogrammetry)

Create an exact digital replica of your site or asset, enabling real-time visualization, efficient design collaboration, and asset management.

### 3D Modelling

Accurate 3D base models of the existing built environment can be provided to clients to kick-start their projects with confidence. This saves you time, resources, and money

### Cloud-Based Access & Collaboration

Access your project data anytime, anywhere, through our intuitive cloud platform. Collaborate with stakeholders in real time, share data instantly, and manage your project from any location with ease.



## ABOUT US

### Suzy Harvey

*BBit/Env(Arch) BArch MNst BOAQ#3976*

As a Registered Architect Suzy has led studios and multidisciplinary teams to deliver projects across public and private sectors ranging from Urban, Community, Multi Residential, Commercial mixed use, Education and complex Healthcare. Twenty plus years of experience in refining delivery methodologies led to an interest in 3D scanning, point cloud and photogrammetry as the perfect tool for project efficiency, accuracy and collaboration.

### Murray McCarthy

*B Com LLB*

With a wealth of experience as a highly qualified senior property executive at prominent companies like Stockland, Multiplex, and Walker Corporation, Murray brings a unique perspective to the real estate landscape. What sets Murray apart is not only his strong commercial acumen, negotiation skills, and clear communication style but also his recognition that new technology in the property industry is vital for efficiency, accuracy and overall better outcomes.

## OUR POINT OF DIFFERENCE

Capture All technicians are all architecturally trained. To ensure optimal outcomes, the person who undertakes the scanning, processes the data and is responsible for 3D modelling and documentation.

## RECENT PROJECTS

### NOOSA SURF CLUB

Capture All was commissioned to provide detailed 3D scans and Revit model of the the Noosa Surf Club building, streetscape of Hastings St, Beach side facade and existing treescape / landscape / boardwalk which was undergoing a major renovation.

### EUMUNDI HOTEL - Comiskey Group

Capture All was commissioned to provide detailed 3D scans and Revit model of the historic Eumundi Hotel in Queensland, which was undergoing a major renovation.

## OTHER CLIENTS

Stockland  
McDonalds  
Mode Design  
Woollam Construction  
Sunshine Coast Council  
QLD Tafe  
Country Road  
Saltair Modular  
Trident  
Macksey Rush

